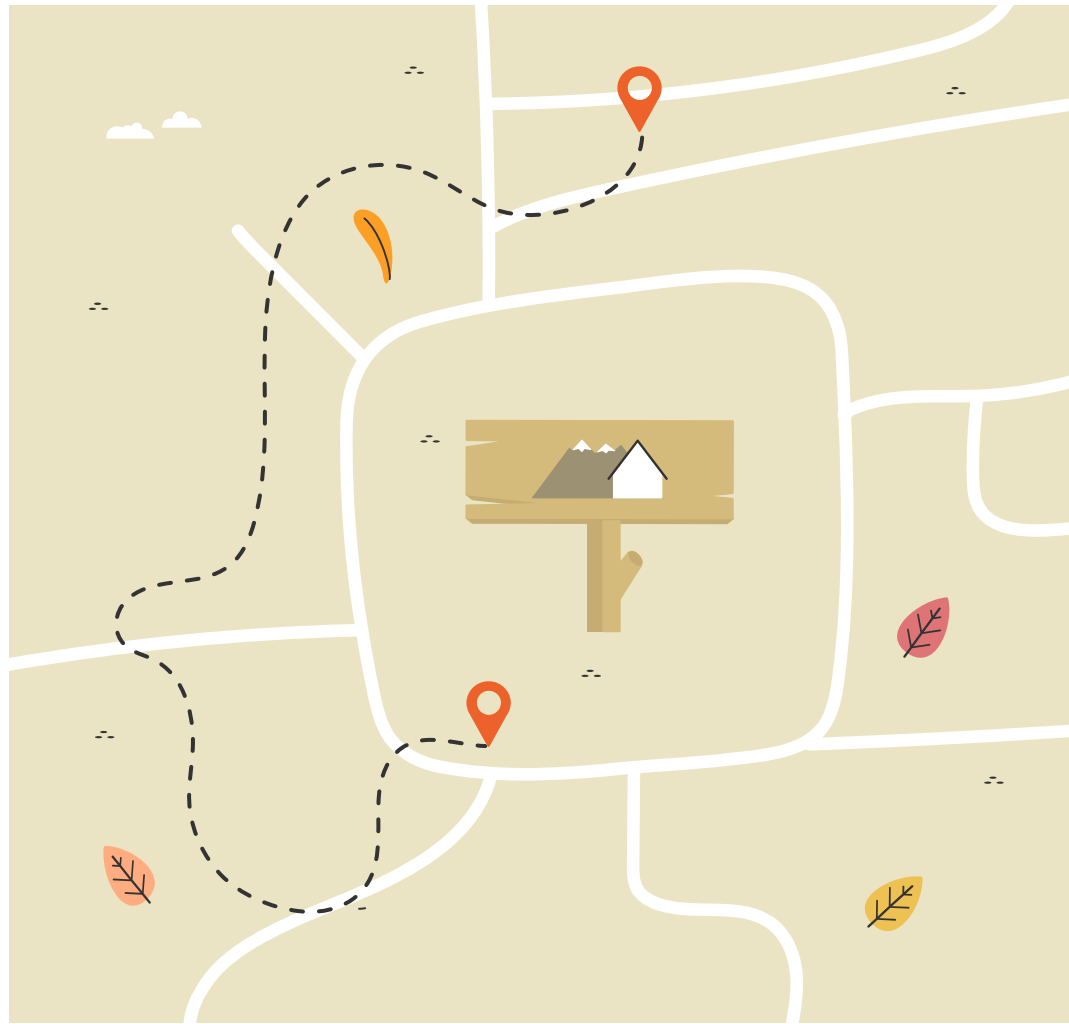


Directions





1

Greetings & Small Talk

Let's Practice!

You

1



How are you?

School

2



How was school today?
What did you learn?

Friends

3



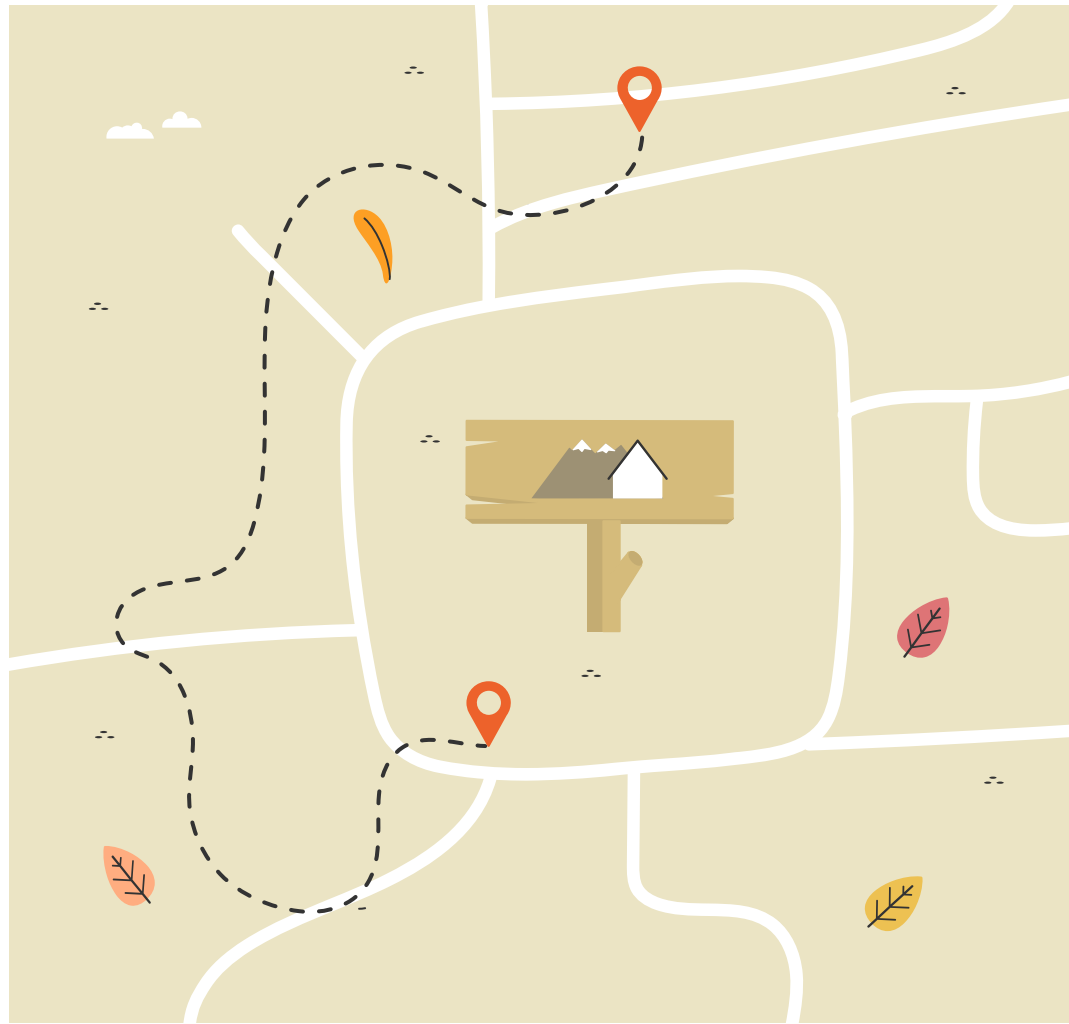
What sports do you and your friends like to play?

Family

4



Any family news?



2

Vocabulary

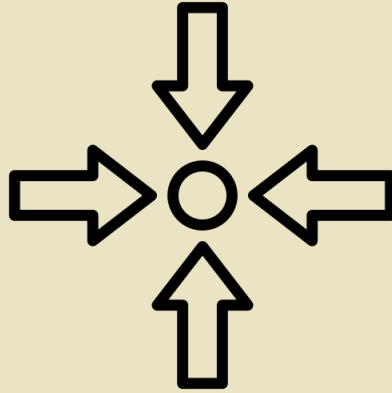


Directions

Direction Signs



Left



Centre



Right

Direction Signs



Traffic Lights



Stop Sign



Blocks

Direction Signs



Straight



U-turn



Crossroad



Sidewalk



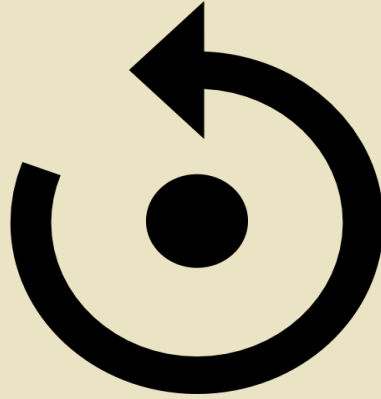
Street



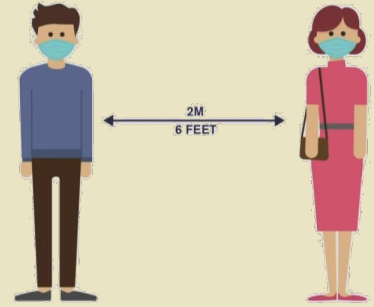
Crosswalk



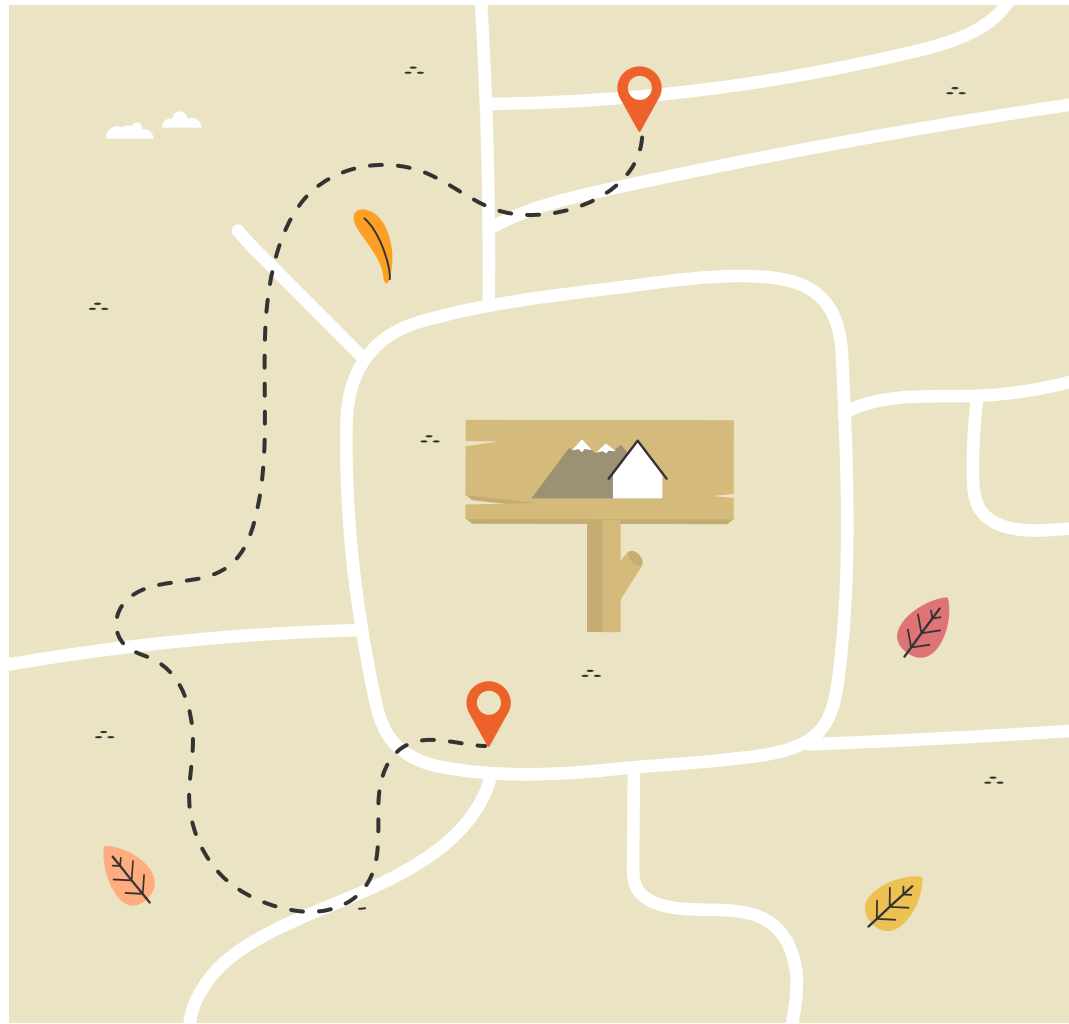
Near & Far



Around



Distance



3

Sentence Structure

To _____ from _____



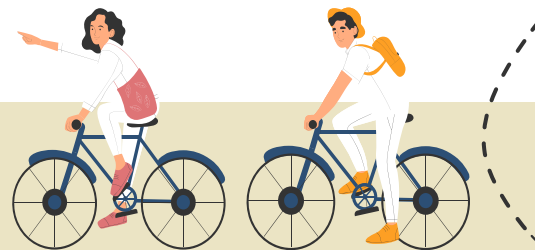
QUESTION:

How do I get **to** _____ **from** _____?

EXAMPLES:

How do I get **to** the hospital **from** the restaurant?

How do I get **to** the hotel **from** John's house?



To _____ from _____



QUESTION:

How do I get **to** the hospital **from** the airport?

ANSWER:

It's **across** the street on the **corner** of Central Road and Pauls Street.



To _____ from _____



QUESTION:

How do I get **to** the Pet Shop **from** the Restaurant?

ANSWER:

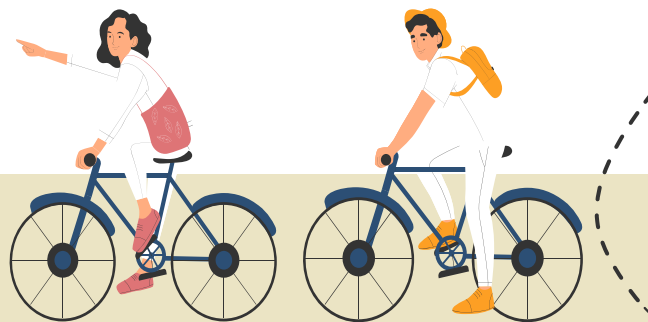
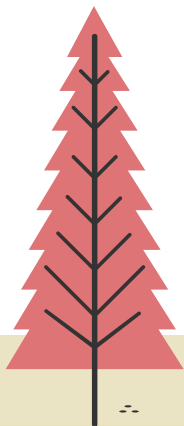
Walk up King Street. It's on the **corner** of King Street and Central Road.



QUESTIONS:

How far is it?

How long does it take?



ANSWER:

It's about ____ blocks.

EXAMPLES:

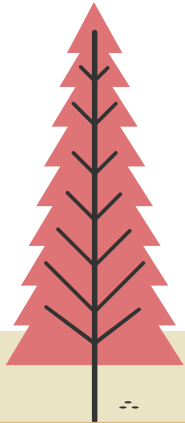
It's about 3 blocks.

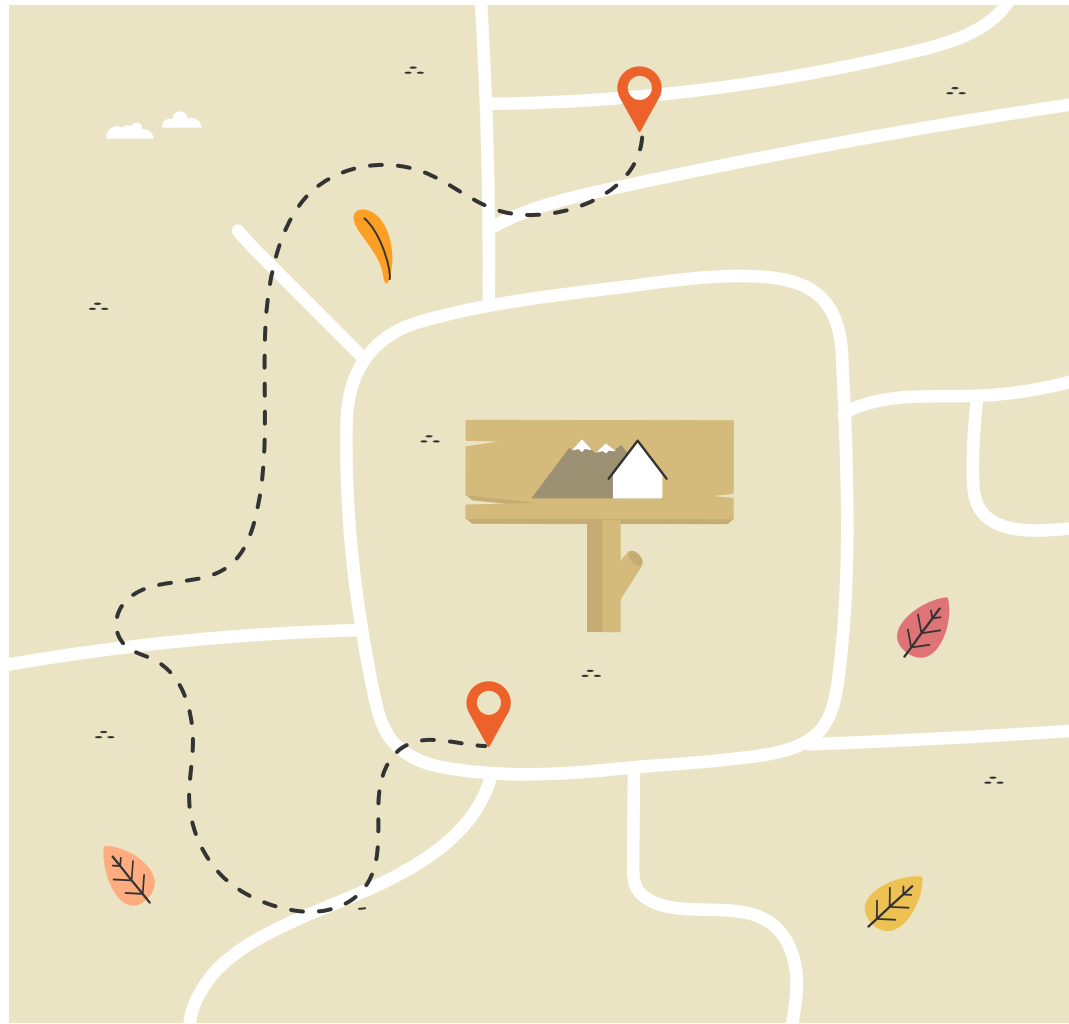
ANSWER:

It takes about ____ minutes.

EXAMPLES:


It takes about 10 minutes.



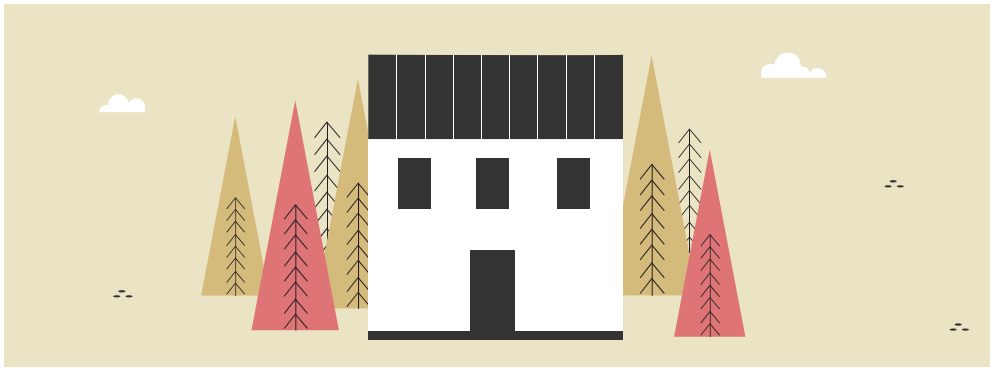


4

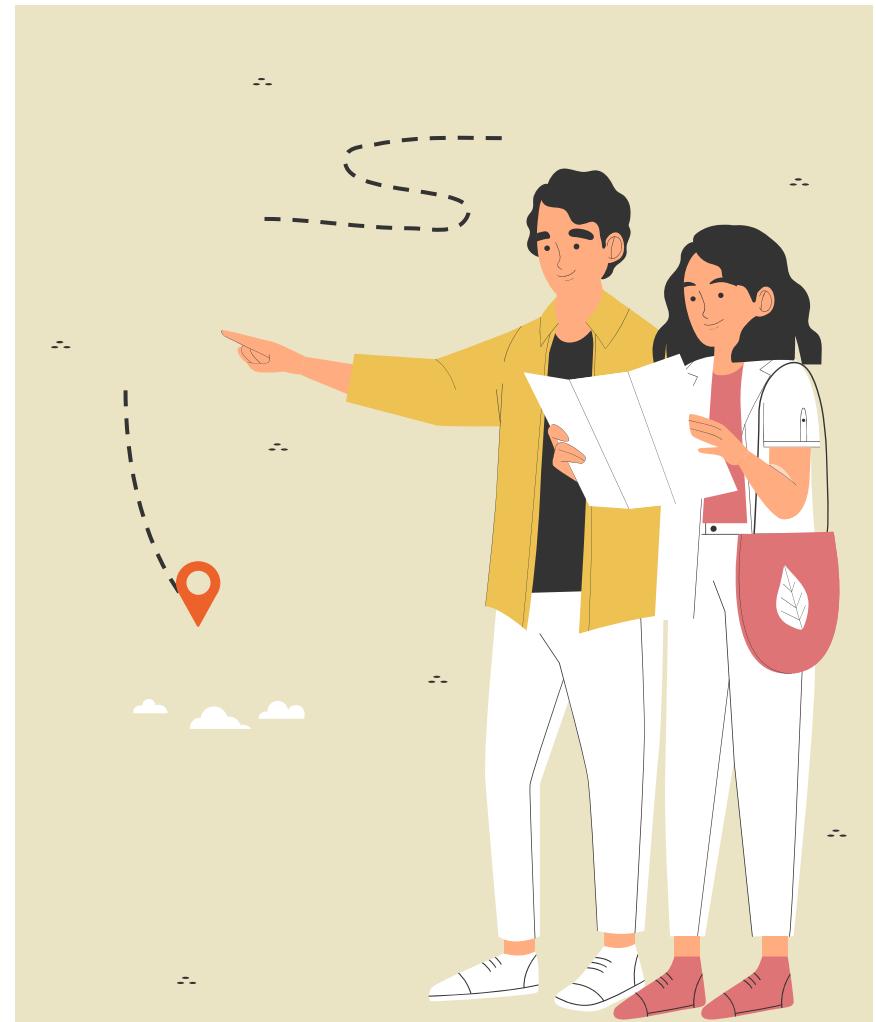
Question Practice

The background is a light beige color. In the top corners, there are white dashed lines forming arcs. On the left side, there are three stylized trees in shades of yellow, pink, and orange, with a blue hill at the bottom. To their right, there are three autumn leaves in shades of pink, orange, and yellow. In the center, there is a white cloud. On the right side, there is a single yellow leaf in the upper part, a white cloud in the middle, and a group of four stylized trees in shades of pink, orange, and yellow, with a blue hill at the bottom. The text is centered in the middle of the page.

**How far is your
school from your
house?**

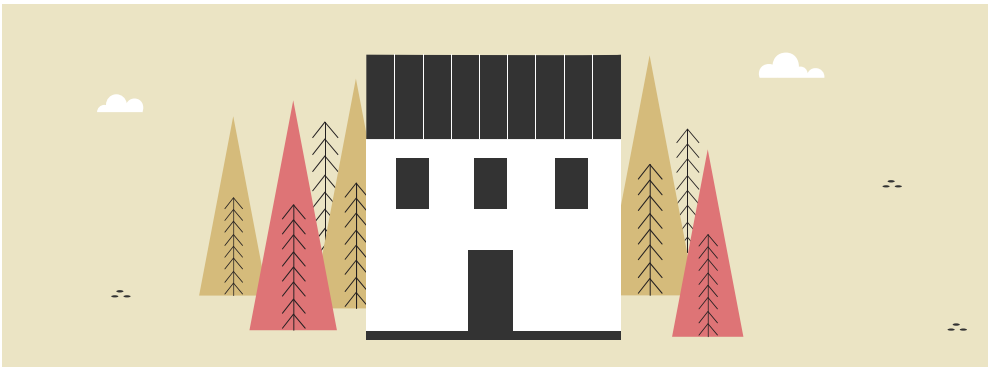


**How long does it
take to get from
your house to
your school?**

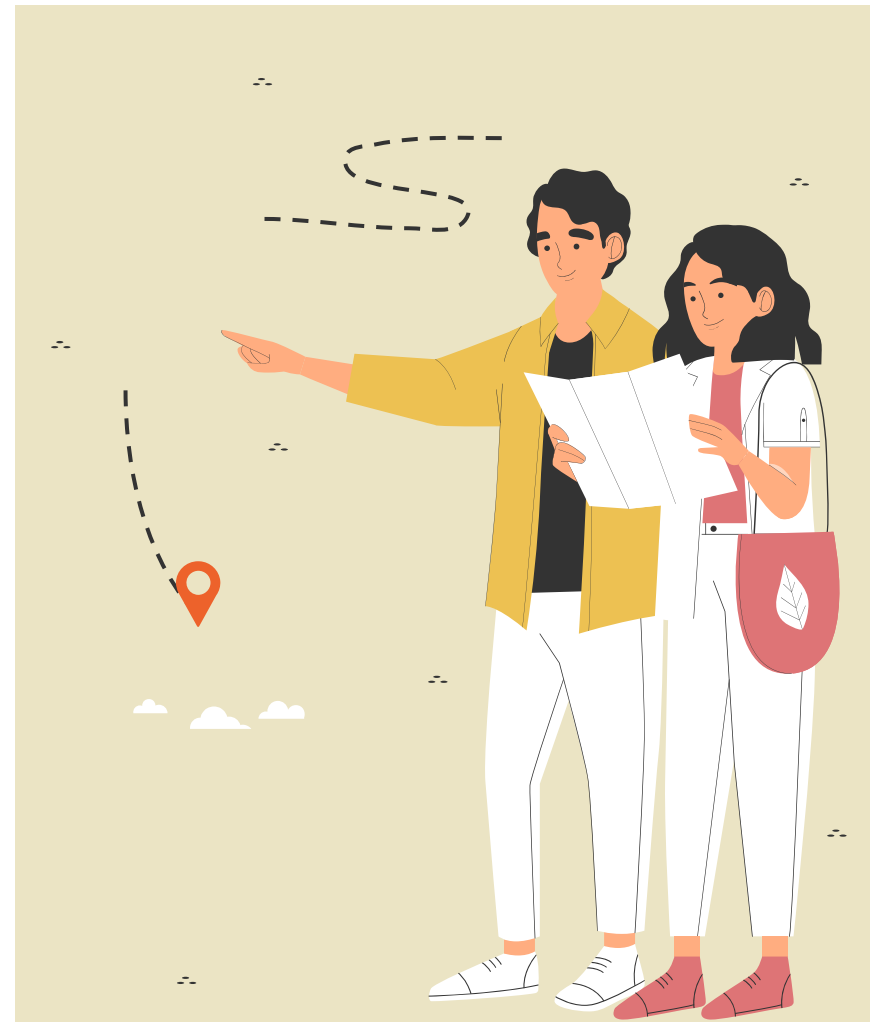


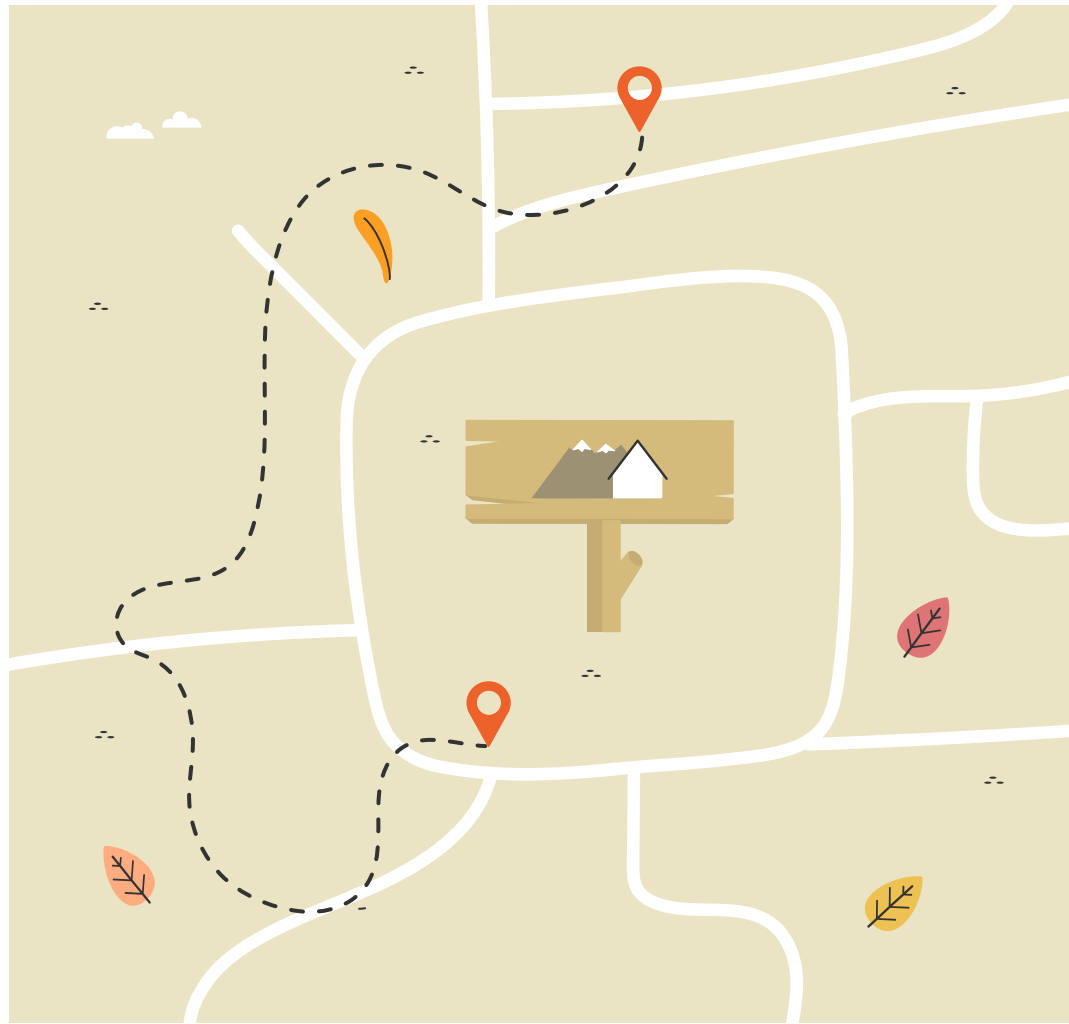
The background is a light beige color with a white dashed line in the top corners. In the top left, there are three stylized leaves in shades of pink, orange, and red. In the top right, there is a single orange leaf. In the bottom left and right corners, there are stylized autumn trees in shades of yellow, orange, and pink, with dark blue hills at the base. There are also white clouds and small black dashes scattered throughout the scene.

**How do you get to a market
from your house?**



**How do you get
to your friend's
house from your
house?**





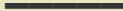
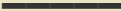
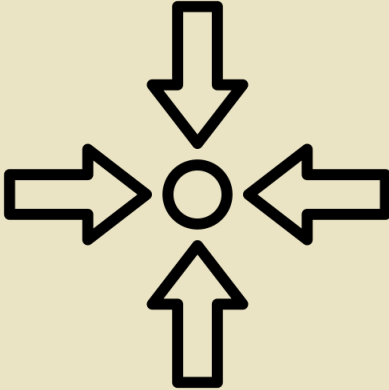
5

Review

Direction Signs



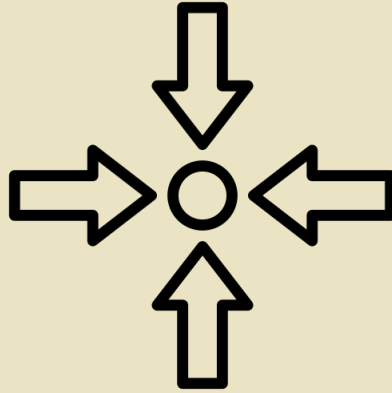
Left



Direction Signs



Left



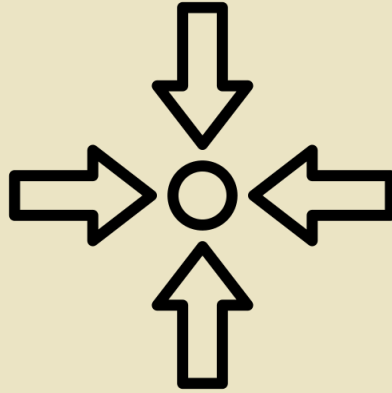
Centre



Direction Signs



Left



Centre

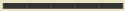


Right

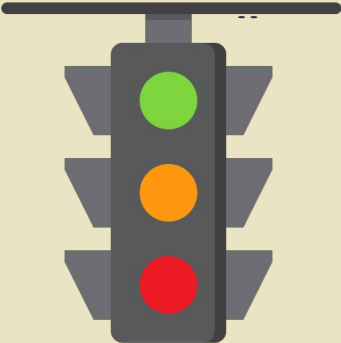
Direction Signs



Stop Sign



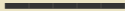
Direction Signs



Traffic Lights



Stop Sign



Direction Signs



Traffic Lights

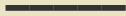


Stop Sign



Blocks

Direction Signs

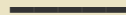


Crossroad

Direction Signs



Straight



Crossroad

Direction Signs



Straight



U-turn



Crossroad



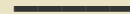
Street



Sidewalk



Street





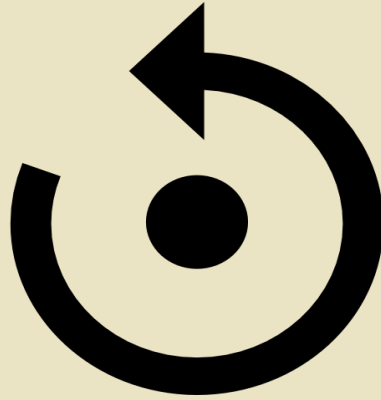
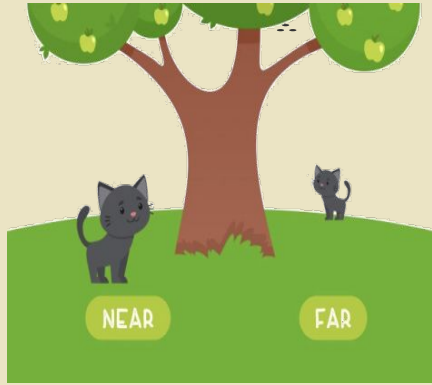
Sidewalk



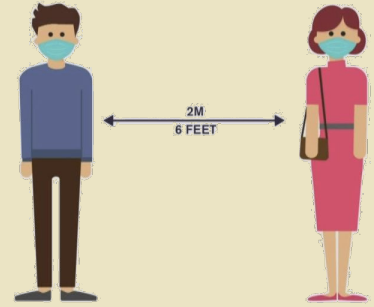
Street

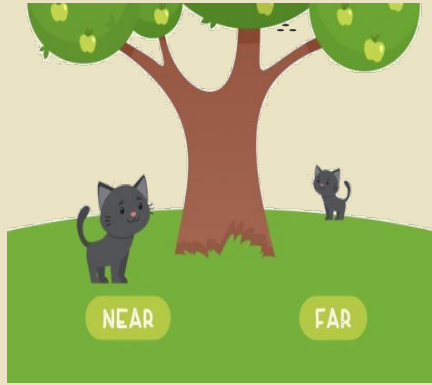


Crosswalk

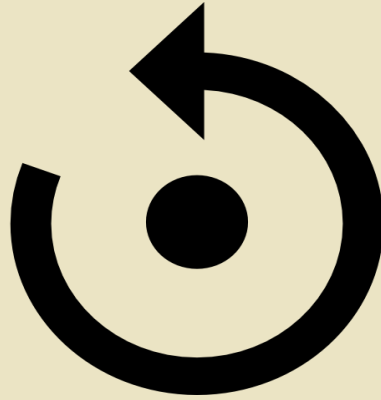


Around

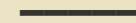
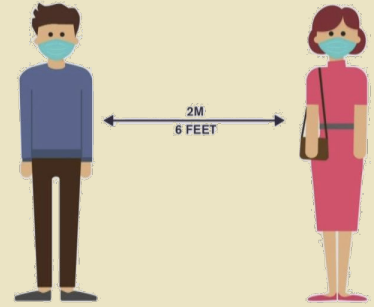




Near & Far

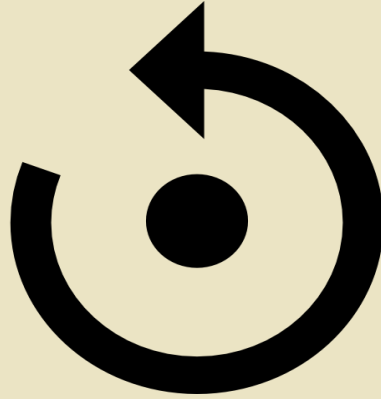


Around

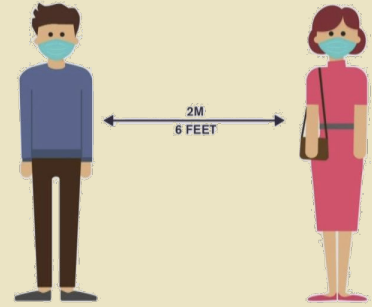




Near & Far



Around



Distance



Unscramble the words:



**lights / left / Walk / at / straight / and / turn
/ the / traffic /.**





Unscramble the words:

**Walk straight and turn left
at the traffic lights.**





Unscramble the words:

does / How / take / long / it / ?





Unscramble the words:

How long does it take?





Unscramble the words:



How / to / airport / do / get / the / I / ?





Unscramble the words:



How do I get to the airport?





Unscramble the words:



minutes / It / about / 10 / takes / .





Unscramble the words:

It takes about 10 minutes.





Unscramble the words:



**your / far / house / How / school / from /
your / is / ?**





Unscramble the words:



How far is your school from your house?



Questions?



CREDITS: This presentation template was created by **Slidesgo**, including icons by **Flaticon** and infographics & images by **Freepik**

